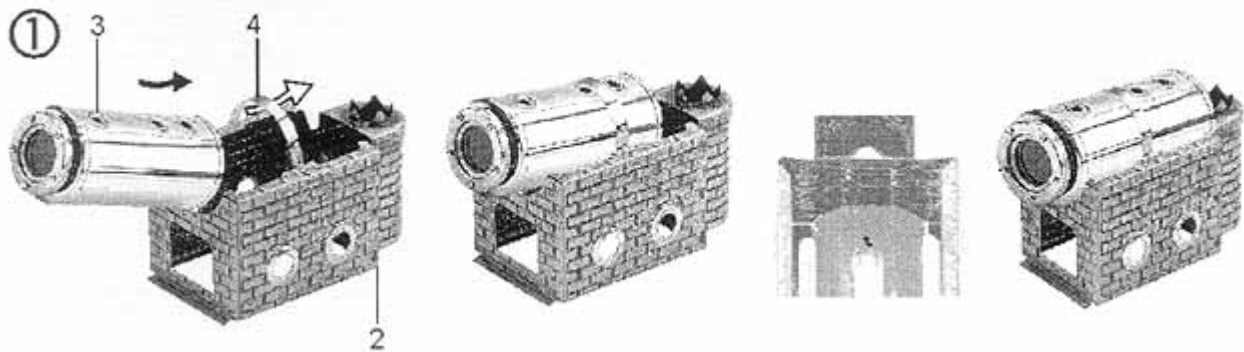
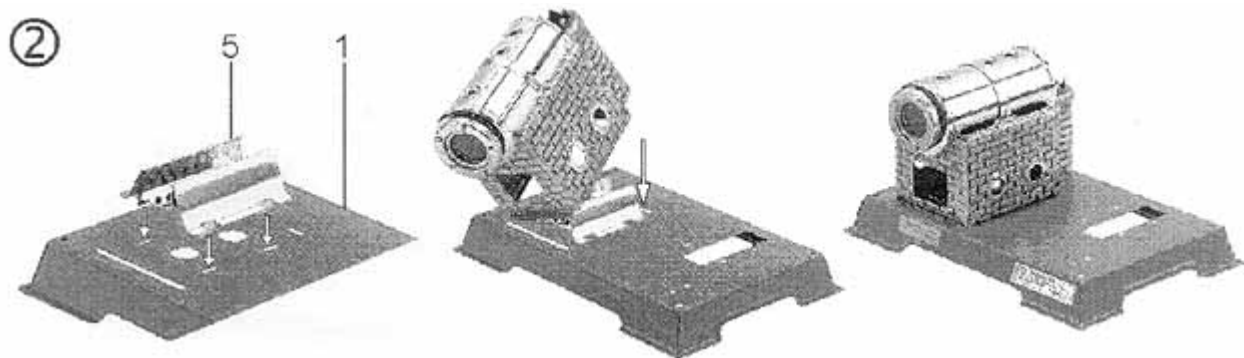


All the parts that you require to build this steam engine, including the tools, are contained in this set. The instruction leaflet is broken down into assembly sections, and each section is illustrated. Please follow the instructions exactly, so that the performance of the steam engine is not adversely affected.



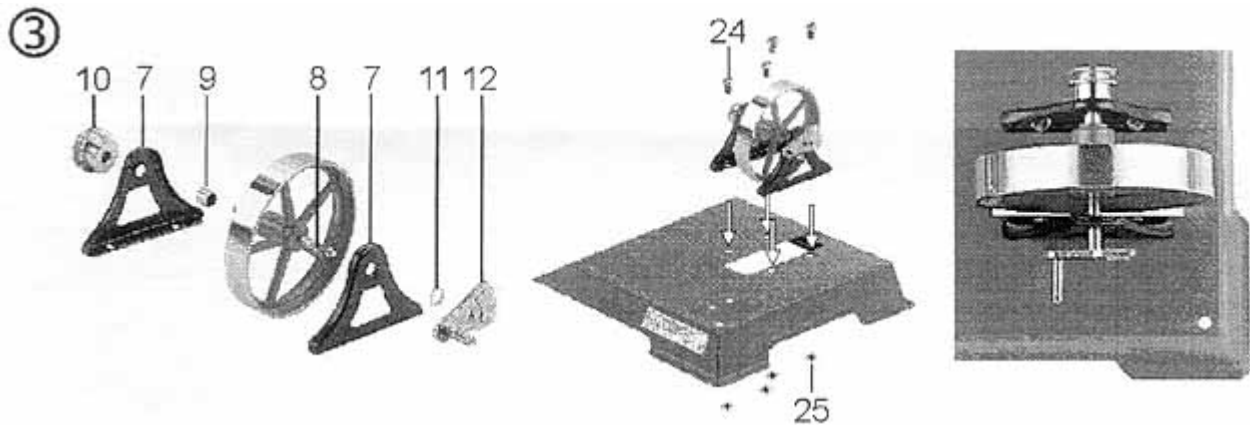
Section 1: Assembly of the boiler and boiler house.

Slide the retaining clamp (4) through the boiler house from below until the flattened ends butt up against the upper flanges of the boiler house (2). Locate in the center notches to restrict sideways movement, then the clamp will stay in place due to its own tension. Holding the boiler (3) by the water gauge end, insert it obliquely to approximately half its length under the retaining clamp, from the fire hole end. Now push the boiler up against the clamp, and at the same time slide it forwards until it locates on the rear boiler support.



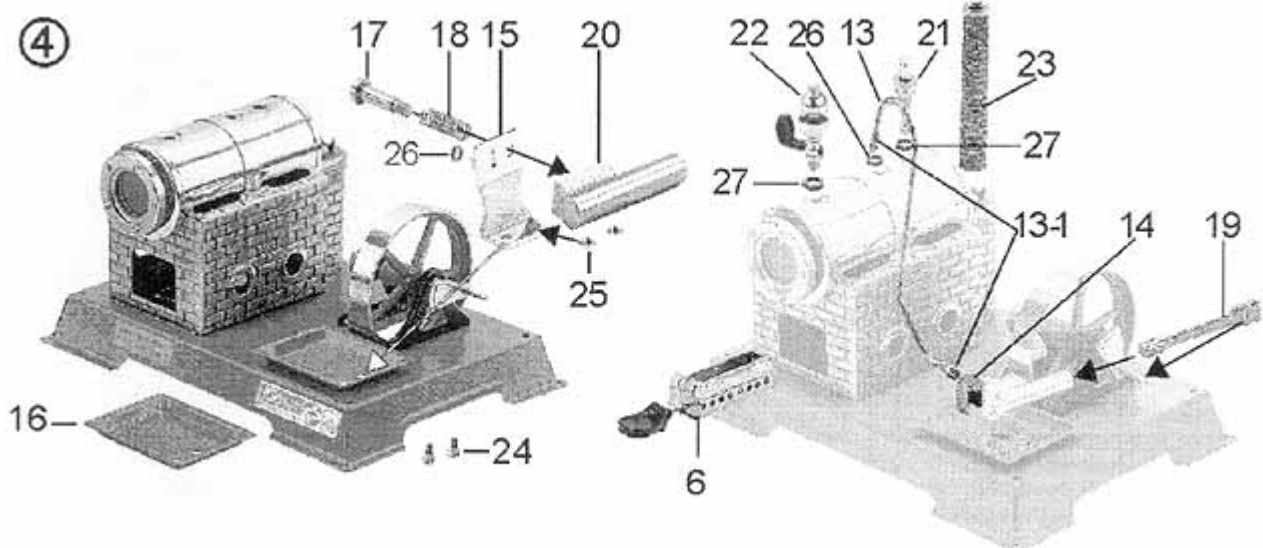
Section 2: Mounting the burner slide and boiler house.

CAUTION when fitting due to sharp edges. Insert the tabs on the burner slide (5) with the point facing towards the front into the corresponding slots on the baseplate (1). Turn the baseplate over, and tap the burner slide tabs outwards using the screwdriver handle, this is best done by resting the burner slide on the edge of a table. Now insert the long tab on the boiler house into the long slot in the baseplate, locate the remaining two tabs into the corresponding slots and tap these over as well. This is best achieved by resting the chimney vent on the edge of the table. Attach the stickers watch water level on the baseplate under the water level glass and the model number sticker next to it.



Section 3: Assembling and mounting the flywheel.

On the short side of the flywheel axle (8) fit one bearing frame (7) and then screw on the crank plate (12). On the other side of the axle fit in the following order the distance bush (9), the second bearing frame (7), washer (11) and then screw on the pulley wheel (10). Now tighten the crank plate and the pulley wheel against each other. This flywheel unit must now be fitted to the baseplate (1) using the screws M3x6 (24) and the nuts (25) so that the crank plate faces towards the outside.



Section 4: Assemble steampipe, baffle plate and cylinder.

Fit the spring (18) and the baffle plate (15) on the screw M3x16 (17) and tighten this 5 to 6 turns into the threaded hole on the cylinder (20). No further as this will damage the cylinder. Now fit the baffle plate and the condensed water tray to the baseplate using two screws (24) and nuts (25). Insert the screws from underneath the baseplate. On the boiler are three threaded holes, in the middle one and in the threaded bush on the baffle plate insert a gasket (26). Slide the cover (14) over the packing screw (13-1) on the baffle plate end of the steampipe (13) and lightly screw both ends of the steampipe into the gasketed holes. Now insert the piston rod (19) into the cylinder and over the crank plate pin. Check that the cylinder is at right angles to the flywheel axle, are any adjustments necessary loosen the nuts holding the baffle plate adjust and retighten. Now using the supplied spanner tighten the steampipe connections. Fit the whistle (22) and the spring loaded safety valve (21) both with a large gasket to the boiler. Using a combination of gaskets you can position the whistle correctly and tighten both hand tight. Insert the burner tray (6) under the boiler and fit the chimney (23) over the vent and the steam engine is finished. Before operating carefully read the operating instructions

We wish you lots of enjoyment in building and operating this steam engine.